

Welcome to the 4<sup>th</sup> combined edition of the Monthly Cancer and Palliative Care Education Newsheet from Mount Vernon Cancer Centre and Michael Sobell House. This month we have important information about the Oncology Nurse Development Programme  
*The Mount Vernon Cancer Centre Education Group*

**CANCER & PALLIATIVE CARE EDUCATION NEWSHEET**  
**FROM MOUNT VERNON CANCER CENTRE**  
**AND MICHAEL SOBELL HOUSE**

**Exciting New Sessions for 2007:-**

Sessions will run every other Thursday 2.15 – 3.00 in Marie Curie Lecture Room

**Specific Cancer Sessions** – Breast, Colorectal, Lung, Prostate, Melanoma, Teratoma and Haemato-oncology.

**Specific Symptom Control Sessions** – Constipation & Diarrhoea, Nausea & Vomiting & Fatigue

**Oncological Emergencies** – Spinal Cord Compressions & SVCO

Opportunity to meet the CNS nurses and updates on Nutritional support available to oncology patients

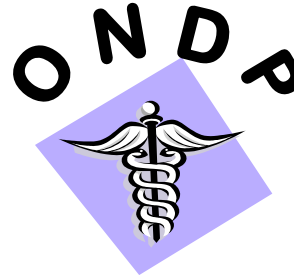
**All this and much much more coming in Jan 2007**

This educational programme can help you achieve both personal goals as well as KSF Core Dimensions: 1. Communication 2. Personal and people development 6. Equality, diversity and rights. Specific Dimensions: HWB 1,2,4,6 and G1.

**For further information contact Trish Millward (Team Leader) Marie Curie Ward and Programme Facilitator**

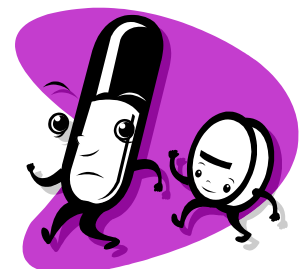


Have we got your contact address wrong?  
If so please contact Sarah Russell on 01923 844567



**Education Initiatives**  
**The Oncology Nurse Development Programme**  
**Trish Millward - Team Leader**  
**(Marie Curie Ward)**

Mount Vernon Cancer Centre is committed to the ongoing development of its staff through life long learning. Life long learning and continuing professional development for staff is integral to the development of a modern health service and the implementation of the NHS Plan (2000), Cancer Plan (2000), The Nursing Contribution to Cancer Care (2000), A Framework for Adult Cancer Nursing (RCN 2003) and NICE Adult Palliative Care & Supportive Guidance (2004). A competent and committed workforce is a key requirement of a quality service. Safe patient care, motivation, updating and the extension of knowledge and skills are all essential outcomes of education and training. The Mount Vernon Cancer Centre Education Group is committed to collaborative education & training opportunities within the centre. In April of this year the Oncology Nurse Development Programme was commenced again led by Trish Millward, Team Leader on Marie Curie ward. The current programme ran from April to September 2006 with a very positive response. All grades/bands of nurses were welcome to attend. The 2007 programme is now developed.



# Forthcoming Events October 2006

**Nurse Led**  
**Junior Doctor**

**Guest Speaker**

**Oncology Teaching**

**Departmental Meeting**

**Palliative Care Education /Training**

Date	Topic	Venue	Comment
3 <sup>rd</sup>	Journal Club	Seminar Room, MSH 2.00 – 3.00pm	Sarah Russell
5 <sup>th</sup>	Syringe Driver 1	MSH Lecture Hall 10.00 – 12.30pm	
5 <sup>th</sup>	Clinical Governance Clinical Cases Palliative RT in oesophageal cancer	Postgraduate Centre 4.00 – 5.00pm 5.00 – 6.00pm	Dr Irene Chong
6 <sup>th</sup>	Lymphoma and Myeloma	Postgraduate Centre	Haem Reg
11 <sup>th</sup>	Health Care Assistant Study Day	MSH Lecture Hall	
12 <sup>th</sup>	Clinical Governance Thyroid Cases French Cancer Plan	Postgraduate Centre 4.00 – 5.00pm 5.00 – 6.00pm	Dr Nihal Shah Dr Rob Glynne-Jones
12 <sup>th</sup>	Essential Communication Skills	MSH Lecture Hall	
13 <sup>th</sup>	Tour of Simulator	Postgraduate Centre	D Shah, S D'Arcy
13 <sup>th</sup>	Palliative Care Symposia – Agitation & Sedation	Postgraduate Centre	
19 <sup>th</sup>	Cancer Centre Visit	Training Room – Chemo Suite	
19 <sup>th</sup>	Clinical Governance Outpatients Waiting Time Audit Consultants Meeting	Post Graduate Centre 4.00 – 5.00pm 5.00 – 6.00pm	Eli Woodgate
20 <sup>th</sup>	Lung and SVCO	Postgraduate Centre	H Simonds
23 <sup>rd</sup>	Fast Rituximab Update	Coffee Room, Chemo Suite, 12.30 – 1.00pm; 1.00 – 1.30pm	Rebecca Dobbs, Roche Lunch provided
26 <sup>th</sup>	Clinical Governance Aromatase Inhibitors in peri-menopausal women IMPORT Trials	Postgraduate Centre 4.00 – 5.00pm 5.00 – 6.00pm	Dr Mei-Lin Ah-See Yat Tsang
27 <sup>th</sup>	Action Learning Sets, Gp 1	MSH Board Room, 2.15 – 3.15pm	Liz Carruthers
27 <sup>th</sup>	Lower GI	Postgraduate Centre	M Harrison
27 <sup>th</sup>	MVCN Breast Study Day	Postgraduate Centre	

To add your education event to this please contact Lorraine O'Connell on EXT 4669 with your name, designation, dept, ext no, date, teaching topic & speaker, target audience and preferred date & venue choice

# **Forthcoming Events October 2006**